

EXPLORER

Explorer is a reliable and precise hardness tester, with a new design and user friendliness. It allows to make quick and precise measurements. The instrument is applied to the working centres and handled just like a standard tool. Different types of coupling are available ISO, DIN 30,40,50 and more on demand. Explorer transfers the data concerning the test just carried out thanks to a Wireless connection via standard Bluetooth. Data transfer is guaranteed up to 30 metres (even if without net noises it is possible to transfer beyond 100 metres). This allows to place the support PC even far from the instrument for better ergonomics of the working place.

SOFTWARE

The software supplied with the support PC is a powerful data analysis instrument. All data are transferred to the wireless PC via standard Bluetooth. Beyond the quick setting of all testing parameters, a complete set is supplied for analysing the data received from the instrument. Possibility of graphic analyses, quick choice of testing scales, quick conversions and the chance to save real time statistic sessions allow a quick and functional analysis of the tests carried out. Furthermore, the software foresees other functions such as language change, software locking, the possibility to create separate user accounts and to print the acquired data via a USB printer. After applying the instrument to the machine tool, it will be enough to switch on the support pc and activate the instrument to start testing. Thanks to the practical front keyboard, the user may access useful information such as the battery level and the testing condition..

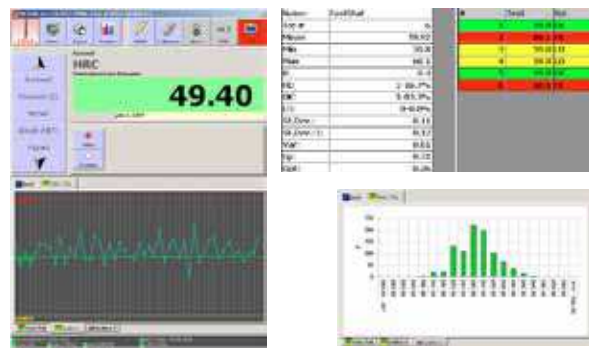


LED information system for information on the testing condition and on the residual energy. All information can be selected via 4 front buttons

Electronic components and mechanical parts are all protected by a thick body in light alloy IP67 leak proof

The instrument was designed for being assembled on any machine-tool thanks to the use of the standard coupling cone (ISO e DIN). On demand, it is also available with ISO 30 and ISO 50 cones.

Internal rechargeable batteries with entry for the supplied battery charger.



Technical specifications: Hardometer

Standards	ISO 6508 / ISO 6506 / ASTM E-18 / ASTM E-10 / ASTM B 724 / DIN 50157
Min. measurable Thickness	0.08mm / 0.003inch (a 65 HRC)
Feasible test	Rockwell HRA(20-92) - HRB(26-100) - HRC(0-80) - HR15N(69-93) - HR30T(16-83)
	Brinell HB5(5-205) - HB30(66-884)
	Knoop 25 - 97 HK
	Vickers / Knoop 13 - 1865 HV
	Tensile Module R (226 - 2898)
HZA	0 - 250
Accuracy	± 0,1 %
Resolution	0,1HRC
Repetitiveness	±0.2HRC
Statistics	Via PC software
Print	Via printer not supplied
Printer	USB Printer not supplied
Power Supply	Internal Rechargeable ni-Mh Batteries Battery Charger supplied
Autonomy	10 hours of continuous use
Energy Saving	Standby after 5 minutes of inactivity
Weight	2 kg

Possibility of LAN connection thanks to the 2 Ethernet ports and the 3 USB ports. It is possible to connect memory keys, keyboards and other external USB peripherals

Explorer's innovation is partly due to the use of the Bluetooth connection that guarantees the wireless transfer of testing data. No cable is between you and the instrument



Wide touch screen monitor to ease the interaction with the preinstalled software

Possibility to incline and orientate the monitor for facilitating visibility in any light condition

Technical specifications: support PC

Processor	VIA
RAM Memory	512 MB
Hard Disk	80 GB
Display	10.4" wide, with touch screen
Connections	3x USB, 2x Ethernet, Bluetooth
Power Supply	110V-220V, 50-60 Hz, internal feeder
Operating System	Windows XP
Weight	5 kg