



**LD 3000 AF**

**Hardness tester and more  
Rockwell and case depth**



### Quick and automatic test cycle

A single button initiation starts the automatic sequence comprising travel from any required clearance to auto contact, measurement of the test surface and retraction to a programmed distance. Contact is maintained even on flexible surfaces enabling an ABSOLUTE result to be obtained. Great time saving especially on dissimilar samples or in repetitive production testing. Takes only a few seconds to test samples of any size.



### Random sampling

For any sample size or shape, the head moves from any required clearance to auto-contact the test piece, securely clamping and following the test surface during measurement for absolute accuracy.

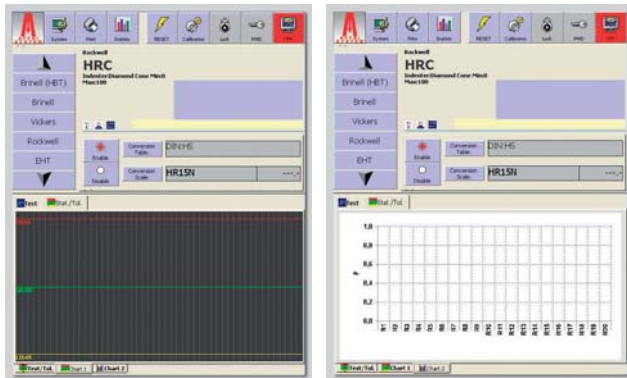
### The Absolute Hardness Tester

Unparalleled features make this machine a central reference. The most precise instrument under all test conditions.



### Both Hardness value and depth are measurable

Thanks to the load cell and electronically programmable closed loop force, up to 9807 N, refreshed at 1000 Hz (Affri patent), it is easy to program Rockwell, Superficial Rockwell and MacroRockwell tests. Scans heat treated surface depth, to more than 1.6 mm, with precise and repeatable accuracy and 0.01mm resolution. 100% of your production can be checked for both hardness and heat treatment depth. No need to prepare the surface leading to a saving on the cost of such additional preparation equipment.



### Conforms to ISO 6508 standard

Dwell time, test cycle, hardness scale and data file for storage of results are all programmable directly via the coloured touch screen for easy of use and clear presentation.



### USB or Bluetooth connection

to output data to external PC, printer or network



#### Headquarter:

**AFFRI**<sup>®</sup>  
Via M. Tagliaterra, 8  
I-21056 INDUNO OLONA - CEE - VARESE - ITALIA  
Tel. +39 0332 201533 +39 0332 206289 - Fax +39 0332 203621  
E-Mail info@affri.com - www.affri.com

#### Nord Europe: Sales & Service

**AFFRI Testing Instruments BVBA Sprl**  
NIEUWSTRAAT 28 B-3360 KORBEEK-LO  
Tel + 32.16.60.66.53 - Fax +32.2.759.90.73  
E-Mail affri@skynet.be - www.affri.com